

Mr. Wilson's 7th grade L/A Poetry Book

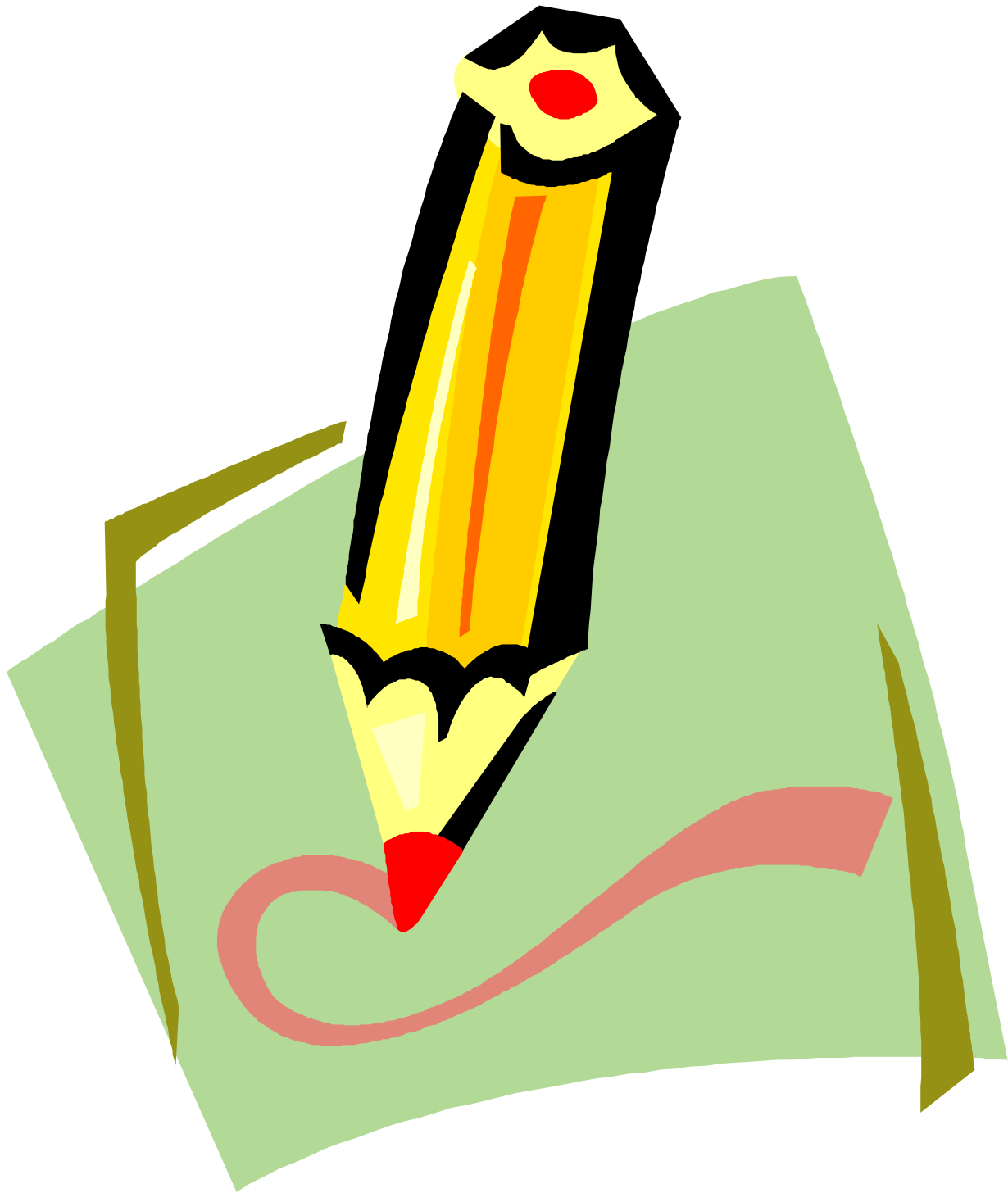


TABLE OF CONTENTS

Haikus

- 1-Summertime Sun..... by Tom Anderson
- 2-Students Examples..... by Author
- 3- Etc. Etc. Etc.

Couplets

- 1-Sweet Dandelion..... by Janine Wilson
- 2- Student Examples..... by Author

Limericks

- 1- Student Examples..... by Author

Summertime Sun

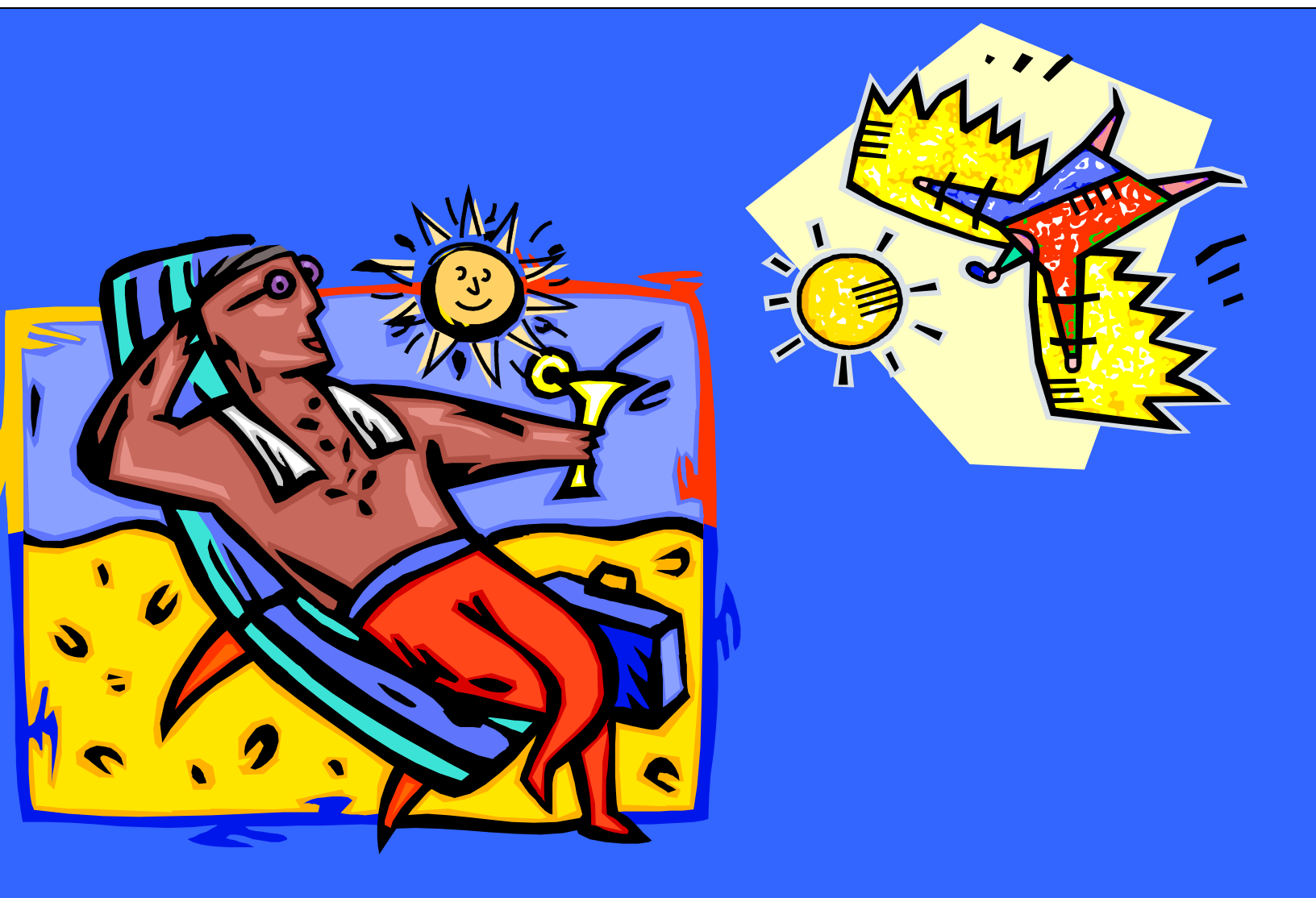
The rays are so warm

I transform into summer

I am Icarus



By Tom Anderson

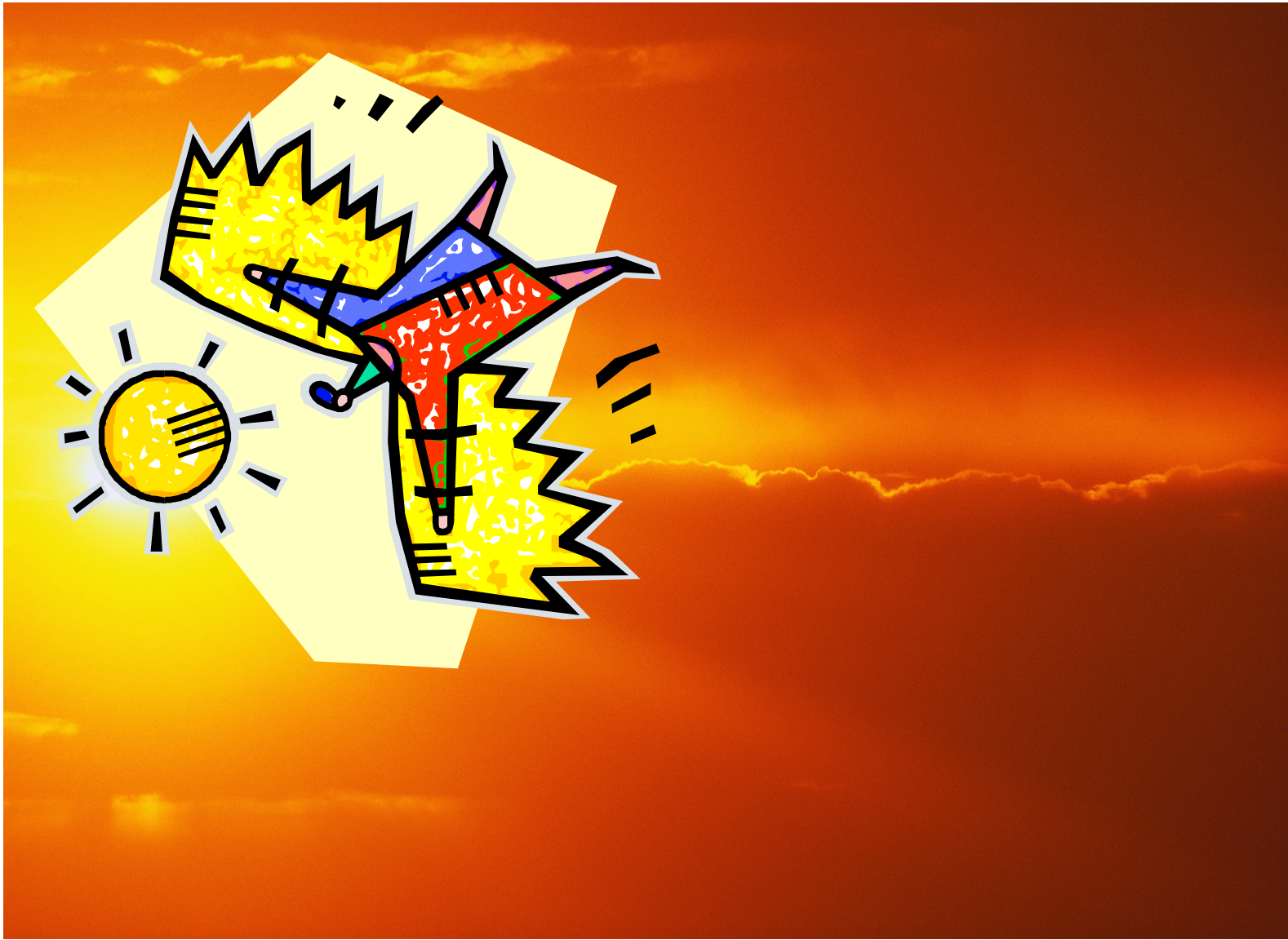


Interpretation of “Summertime Sun”: The poem talks about the intoxicating feeling of the warmth of the sun. The summer sun seems to call us too it. Just as Icarus we can’t get enough of the sun. We want more and more.

Poetic Form: Haiku

Poetic Devices:

- Repetition of the word “I”
- Assonance with the repeated use of r controlled vowel sounds
- Rhyme of warm and transform



Interpretation of Summertime Sun: The poem tells the story of Icarus who in Greek mythology flew too close to the sun. The sun felt good to Icarus at first but then he flew too close. His wings which were glued together with wax melted in the sun and Icarus fell to his death. The poem is a Haiku.

THE SWEET DANDELION

Can you see the flower of gold?
The flower that the little child holds

A gift to be given to the little one's mother,
A symbol of a love that is not like one other

This flower that is love in a little child's eyes,
Is something the child will later despise

Poisoned, strangled, and left to die,
But it continues to survive and nobody knows why

When your life is in turmoil and you want to give
up trying,
Just remember the life of the sweet dandelion.

By Janine Wilson

Interpretation of "The sweet dandelion"- Life is full of changes the way we perceive things can change overtime. Even when the changes of life have you in distress remember you can make it through tuff times. Many people have maid it through and tuff times are just a part of life.

Poetic Form- Couplet

Poetic Devices: Rhyme, Couplet, Metaphor



Interpretation of “The Sweet Dandelion”: No matter how bad your life gets remember dandelion. No matter what happens it survives. People may like you at first but then not like you later but you can still go on.

Poetic Form: Couplet

GLOSSARY

Alliteration - the use of the same consonant sounds in words that are near each other.

Assonance - the repetition of vowel sounds in words that are close to each other

Ballad - a form of poetry that alternates lines of four and three beats

Consonance - the effect of similar speech-sounds being near each other

Couplet - a stanza (or even a poem) consisting of two lines

Free verse - poetry that is free from the constraints of regular meter and fixed forms

Haiku - a three-line poem, consisting of seventeen syllables split 5 - 7 - 5

Imagery - the elements in a poem that spark off the senses

Limerick - a five-line poem, almost always humorous, and frequently rude. Its rhyme scheme is *aabba*, with the first, second and last lines having three stresses and the third and fourth lines having two

Metaphor - A metaphor takes two things and claims they are the same. One way of doing this is by saying X is Y

Meter - a system of describing what we can measure about the audible features of a poem

Onomatopoeia - the forming and use of words and phrases to imitate or suggest the sounds they describe, such as bang, whisper, cuckoo, splash and fizz

Personification - giving human characteristics to non human items or animals

Quatrain - a stanza of a poem containing four lines

Rhyme - the repetition of the end-sounds of words

Rhythm - the recurring pattern of strong and weak syllabic stresses.

Simile - the comparison that claims the things being compared are similar, rather than the metaphor's claim that the two things are the same. This usually appears as "A is like B", or "C is as friendly as a D".